

Contact Us

Phone: (877) 500-5675

Email: info@buildplh.com

6852 N Fireball Ave

Meridian, ID 83646

Priced At

\$799,900

StarPointe

The Timberline Floor Plan

- 2144
Square Feet
- 3
Bedrooms
- 2.0
Bathrooms
- 3
Car/RV Garage



Step into the elegance of the Timberline, a thoughtfully designed 2,144-square-foot single-level home. Featuring 3 bedrooms, 2 bathrooms, and an impressive RV garage with a single-car bay, this versatile space can also accommodate a 3-car garage setup, ensuring all your parking and storage needs are met.

As you enter, you're welcomed by a spacious entryway complete with a coat closet, setting the tone for the home's open and inviting layout. Down the hall, you'll find a conveniently located powder room, a well-appointed laundry room, and two additional bedrooms accompanied by a full bathroom, creating a perfect private retreat for family or guests.

The heart of the home is the expansive kitchen, featuring a large island, ample storage, and seamless connection to the dining area and living room. Perfect for entertaining, the living room boasts a cozy fireplace framed by two sliding glass doors that lead to a covered patio—an ideal spot for indoor-outdoor living year-round.

On one side of the living room, you'll find the luxurious primary suite, a true haven with a spacious bedroom, a spa-like bathroom with a soaking tub, and an expansive walk-in closet. On the other side, a den/office provides a versatile space, ideal for working from home or creating your dream hobby room.

The Timberline home plan effortlessly combines function and style, offering a layout designed for comfort, convenience, and modern living.

Square footage is approximate and subject to change. Completion dates are subject to change. Pre-sale price is the base price of home. Permit Ready includes structural options. Pricing is subject to change. The Quick Move In price includes Structural and Personal choice options. Pacific Lifestyle Homes, Broker. WA LIC# PACIFLH924RI; OR CCB# 173524.

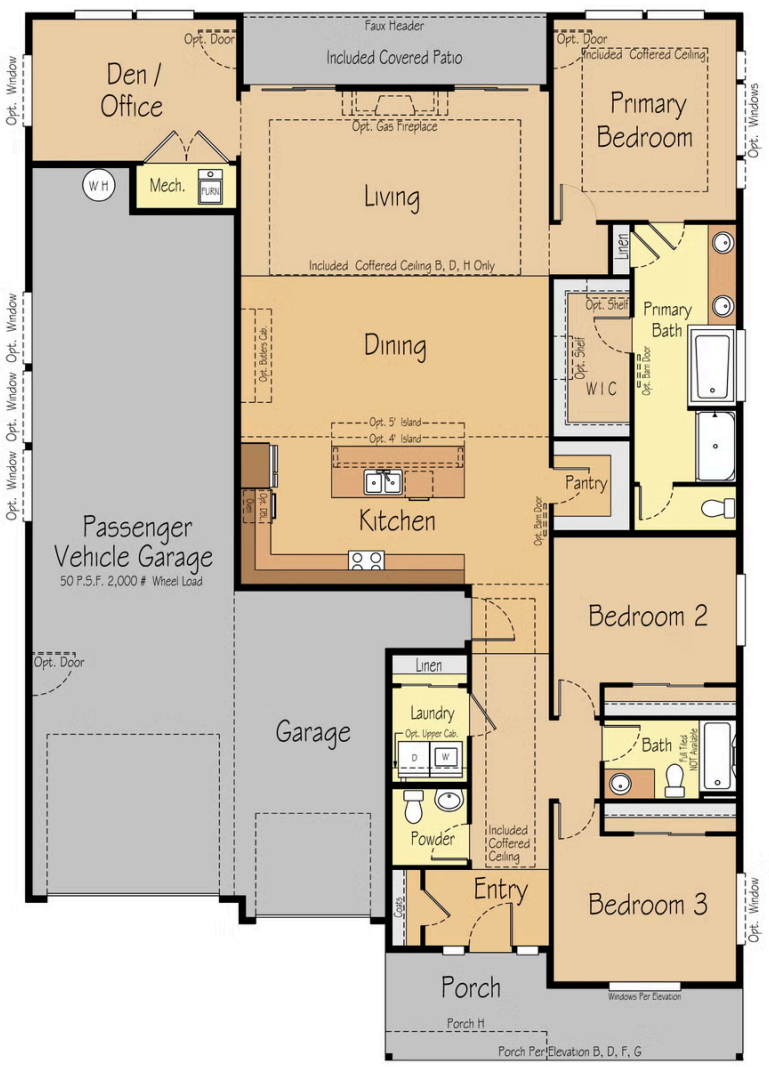
Contact Us
 Phone: (877) 500-5675
 Email: info@buildplh.com

6852 N Fireball Ave

Meridian, ID 83646

The Timberline Floor Plan

2144 Timberline



Square footage is approximate and subject to change. Completion dates are subject to change. Pre-sale price is the base price of home. Permit Ready includes structural options. Pricing is subject to change. The Quick Move In price includes Structural and Personal choice options. Pacific Lifestyle Homes, Broker. WA LIC# PACIFLH924RI; OR CCB# 173524.